

Vinyl-Fit Floor Access Door Installation, Operation and Maintenance Guide

INSTALLATION GUIDE

The Access Panel Company provides the following installation recommendations and guide as a suitable method of installing Vinyl-Fit single floor access covers. However, customers should ensure the minimum dimensions and installation guidance provided are suitable for the intended application and place of installation. Further engineering advice may be required.

Installation should be made using acceptable levels of workmanship and according to the National Code of Practice (UK BS 8000-0:2014) series of standards.

The Access Panel Company floor access covers are intended for horizontal installations so that the upper surface of the cover and frame are either flush or slightly below (approximately 2mm)

the surrounding finished floor/pavement level. It is recommended that covers remain fitted to their frame at all times during installation. If not there is a possibility the cover will not fit correctly after installation.

We do not recommend the use of our access covers in applications where the temperature will exceed 70°C.

Care must be taken if any surface of the cover or frame may come into contact with installation materials such as high alkaline mortars, concrete, grouts or additives which may react adversely with metallic materials. If in any doubt we recommend that all contact surfaces are primed prior to installation with a suitable barrier paint e.g. bitumastic paint for steel or zinc chromate paint for aluminium.

MORTAR AND CONCRETE SPECIFICATIONS

To enable covers to carry their intended service loads the following minimum material specifications must be used or exceeded.

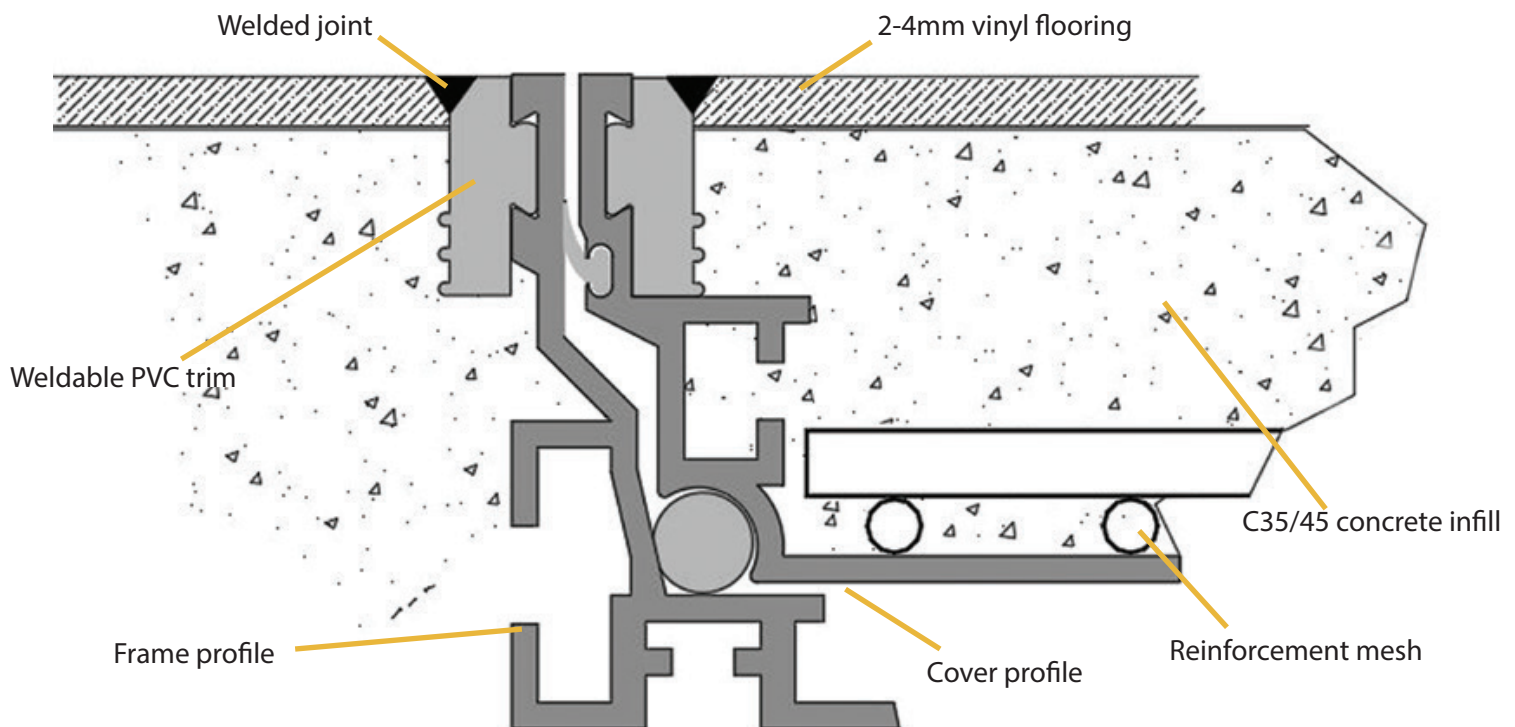
Frame bedding mortar—minimum class M6 to BS EN 998-2:2016.

Frame haunch and recessed cover structural infill concrete—minimum grade C35/45 concrete to BS EN 206:2013 (maximum aggregate size 10mm). Recommended slump S2 or S3.

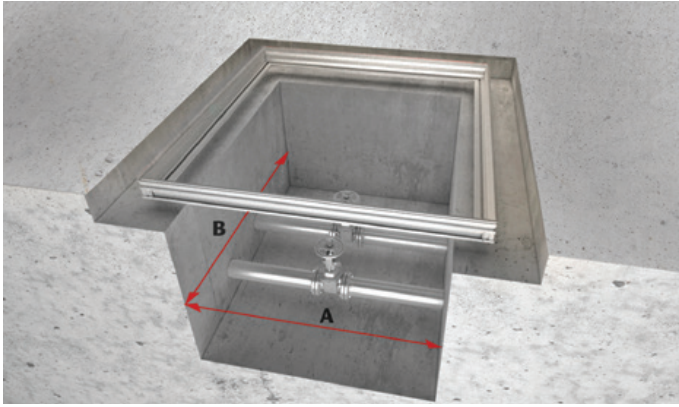
If access covers are to be used in a wet area, waterproofing additives may be required. Fast-curing cementitious mortars or concrete may be used as long as the performance is at least equivalent to those stated above.

The concrete specified above must not be replaced by screed.

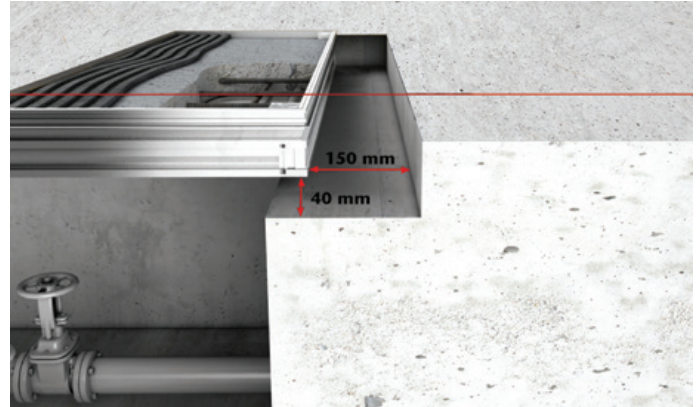
INSTALLATION DETAIL



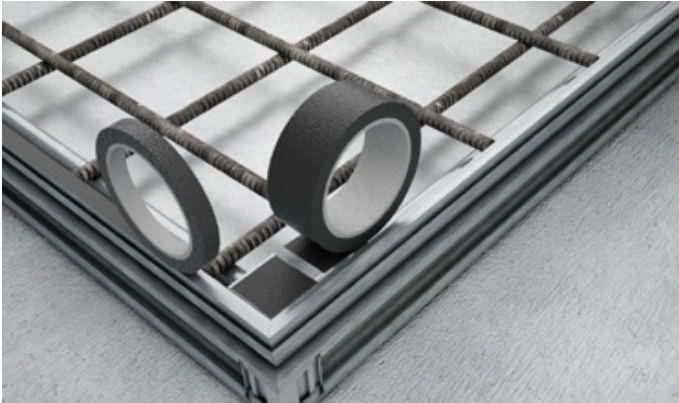
Vinyl-Fit Floor Access Door Installation Guide



Step 1: Check that the shaft size is not larger than the clear opening of the access cover.



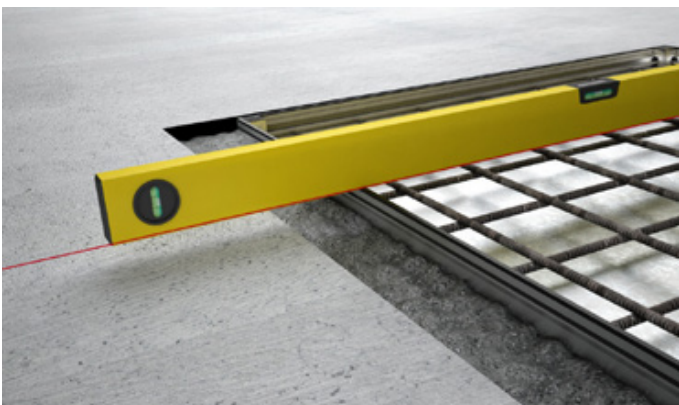
Step 2: A minimum rebate of 150mm wider than the over frame size and 40mm deeper than the over frame height of the access cover is to be provided for bedding and haunch material.



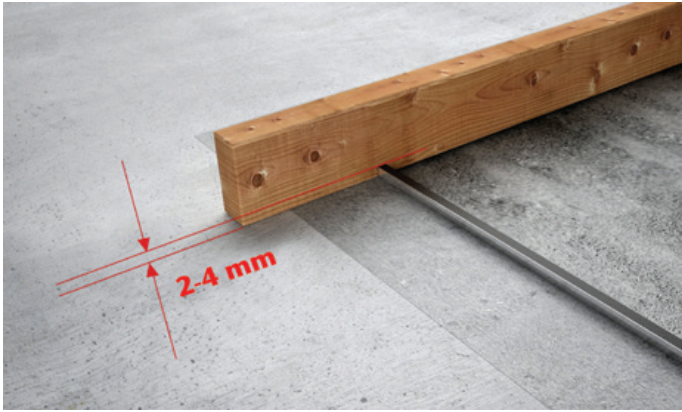
Step 3: Ensure upper surfaces of the cover and frame, weldable PVC trim, joints and locking areas are protected from accidental spillages or ingress of installation materials. This will help reduce the need for cleaning prior to vinyl floor welding or at the end of the installation.



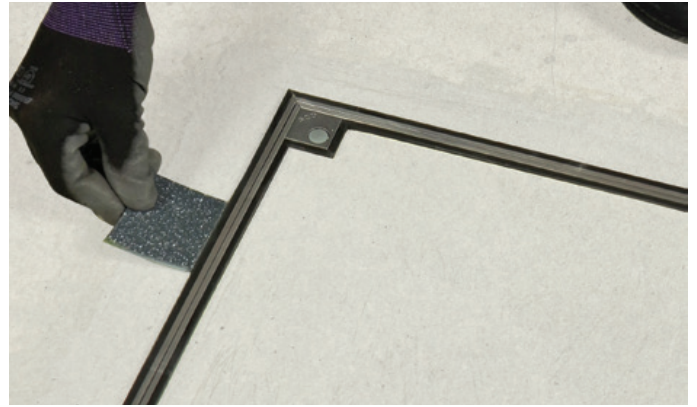
Step 4: Lay a mortar bed of minimum 40mm thickness all around the shaft opening the full width of the frame.



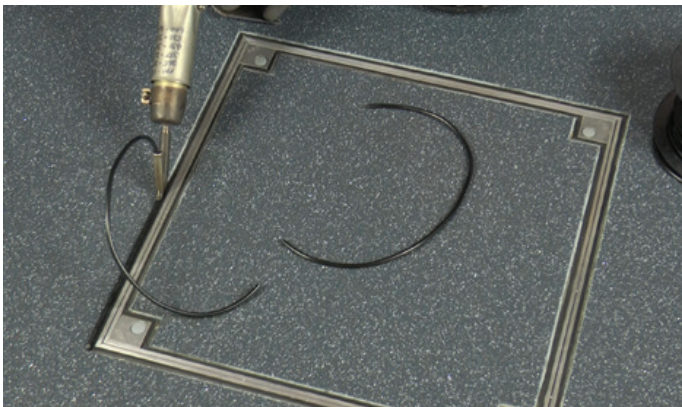
Step 5: Bed and level to the access cover and frame centrally over the shaft opening ensuring the top edges of the access cover and frame are at the finished vinyl floor level. When tapping down to level use a piece of wood to protect the upper surfaces. Ensure the frame is fully supported by the mortar with no voids. Allow mortar to sufficiently harden.



Step 6: Ensure the reinforcement provided is placed at the bottom of the cover. Haunch the frame fully with concrete (min 150mm wide) and fully fill the cover to within 2-4mm of its upper surface to suit the thickness of vinyl flooring to be installed. Vibrate concrete where necessary to ensure no voids and the weldable PVC trim is fully supported.



Step 7: Allow the concrete to sufficiently harden and dry out. Remove tape protection. The cover can now be opened with the lifting/locking keys provided. Point any gaps in the bedding under the frame if required. Refit the cover. The vinyl floor finish can now be fitted and welded to the PVC trim attached to the frame and cover as per the manufacturer's instructions.



Step 8: Once the final floor has been fully installed, remove any excess adhesive or grout from around the cover and frame. Open the cover with the lifting/locking keys provided. Clean all surfaces and ensure the sealing areas of the cover and rubber seals are free from debris. Lubricate all seals with a suitable silicone grease.



Step 9: Refit the cover and check there is an even gap between the cover and frame. Insert all locking screws and hand tighten to securely lock the cover. Refit all locking screw dust caps. Once the materials have fully cured, the access cover is now ready for use and service loads. Retain all spare parts, the installation and maintenance booklet and lifting/locking keys for future use.

