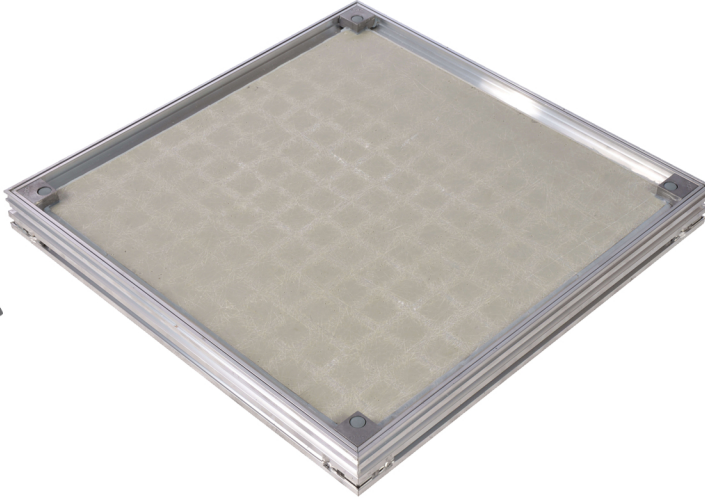


# Quick-Fit Floor Access Door

Range: 100



## Key Features

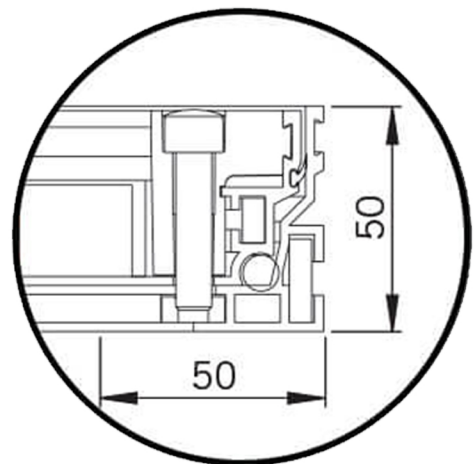
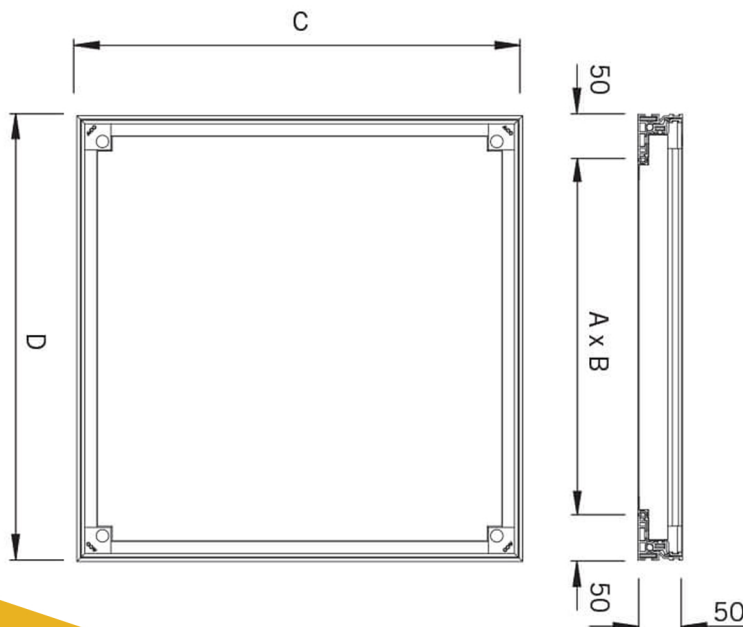
- Elegant 4mm aluminium edges blend discreetly with floor finishes
- Easy removal with four corner locking/lifting positions and stainless steel locking bolts and dustcaps as standard
- Frame only 50mm deep. Light weight tray design suitable for floor finishes of up to 15mm thickness
- High performance triple EPDM seals for liquid, odour and dust-tight applications
- Reinforced for long term durability and performance
- Two lifting/locking keys and installation manual provided with each access cover

The Access Panel Company's floor access door range provides a high-quality finish and easy access to underlying services and ducting. All products are fitted with both liquid and odour tight EPDM seals as standard and created to blend perfectly with a wide selection of both hard and flexible floor infills of thickness up to 15mm.

Our range of recessed access hatch covers are designed for internal and external applications associated with both commercial, private and public sector buildings. Typical applications include areas used by pedestrians, light vehicle traffic and heavier traffic such as forklifts.

The Access Panel Company's access hatch covers complement a variety of hard and flexible floor finishes including concrete, epoxy, terrazzo, carpet, stone, ceramic tiles or vinyl.

Fast installation, high quality aluminium and structural composite recessed floor access covers with a frame depth of only 50mm. Structural composite reinforced design allows flooring material to be installed directly without the need for a concrete infill making covers lighter to remove and significantly faster to install. Range of size options available for clear openings of between 200mm and 600mm. All covers fitted with EPDM liquid, odour and dust seals as standard with four point stainless steel locking.





## Technical & Fitting Details

### Benefits

No concrete infill is required to allow light weight and fast installation. Covers are easier to install and easy to replace or change to suit a constantly adapting environment. There are a range of standard cover sizes available for clear openings from 200mm to 600mm.

### Suitable Flooring Types

The flooring types that we would recommend as the most suitable for these panels include: Concrete, Epoxy, Terrazzo, Stone and Ceramic Tiles, Carpet and Wood.

### Ideal Applications

These Quick-Fit door Access Door panels are ideal for a range of environments. Including but not limited to: Shopping Centres, Offices, Hospitals, Schools, Leisure Facilities and Swimming Pools.

### Availability

These Panels are available with the standard sizes (as shown below). Bespoke sizes available, for current lead times and more information please call or email our technical sales team.

Standard Sizes (mm)		
300 x 300	450 x 450	600 x 450
600 x 600	750 x 600	
Hinge Side always stated first		Bespoke sizes available

### Mortar and Concrete Specifications

To enable covers to carry their intended service loads, the following minimum material specifications must be used or exceeded.

Frame bedding mortar-minimum class M6 to BS EN 998-2:2016.

Frame haunch and recessed cover structural infill concrete - minimum grade C35/45 concrete to BS EN 206:2013 (maximum aggregate size 10mm).

If access covers are to be used in a wet area, waterproofing additives may be required. Fast-curing cementitious mortars or concrete may be used as long as the performance is at least equivalent to those stated above. The concrete specified must not be replaced by screed.

### Maintenance

All access covers and frames must be inspected every six months for any damage or wear which may impede their service performance. In order to carry out this inspection the covers must be opened/removed. This aids inspection and also helps keep opening mechanisms and gas springs where fitted in good working order.

During inspection it is recommended that all components are cleaned with a mild detergent and water. All seals, hinges and locking screws should be coated and lubricated with a suitable silicone grease. Finally replace any damaged or worn components.

### Online Support

See website for fitting guides and videos. DXF, DWG, CAD, PDF, BIM cross-section drawings and full technical specifications.