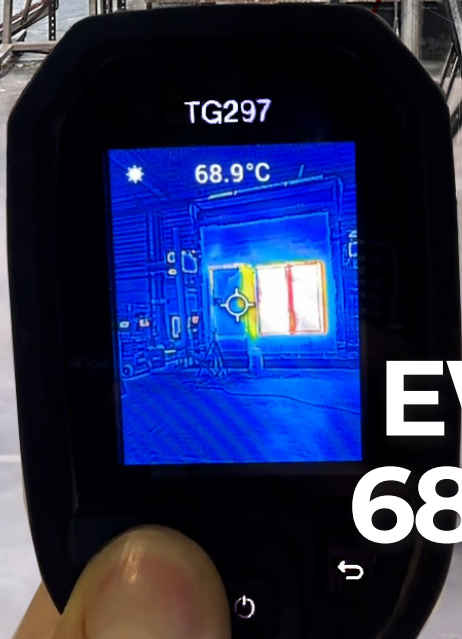




Simplis® | THE ACCESS PANEL
COMPANY LTD

Christo Riser Doors EW 120



EW vs **E**
68°C vs **710°C**



Fire performance only with 100mm thick insulation!

sales@simplis.co.uk

01724 853 090

simplis.co.uk



About **Fire** Ratings

British & European Standards

The British Standard (BS) applicable to Riser doors and access panels is **BS476 part 22:1987**.

The applicable European Standard (EN) is **EN1634-1:2014+A1:2018**. Both standards are valid in the UK for Building Control purposes. Field of Application (FOA) reports can be written to either BS or EN standards. Classification reports are EN standard.

Despite the age gap between the two, the BS & EN tests are very similar. Furnace temperatures and pressures are almost identical, **with the EN test considered more onerous**, mainly due to the methods used to measure the data. EN fire tests express results as **Integrity (E)**, **Insulation (I)** & **Radiation (W)**. BS tests measure integrity, insulation and radiation but this is not expressed as a qualification but reported in the test report data.

About **E** Rating (Integrity)

E rating is a measure of the ability of a construction element to **withstand fire exposure on one side** without allowing flames, smoke and hot gases to pass through to the unexposed side. E rating does not prevent the transfer of heat. BS tests are an E equivalent.

E rated doors are classified to **EN 13501-2**. The period is declared in minutes, 30, 60, 90, etc. An E rated door with a 30 min classification period would be declared as **E30**.

About **EW** Rating (Integrity and Radiation)

EW rating is a measure of Integrity performance **with the addition of minimizing radiant heat transfer** from the fire side to the unexposed side. EW doors reduce the risk of fire transmission caused by radiant heat and allow for safer passage of occupants exiting past EW doors opening onto escape corridors or stairwells.

EW rated doors are classified to **EN 13501-2**. The period is declared in minutes, 30, 60, 90, etc. An EW rated door with a 30 min classification period would be declared as **EW30**.

About **EI** Rating (Integrity and Insulation)

EI rating is the highest performance classification level offering the maximum level of protection for people and property. In addition to integrity, it **measures the transfer of heat from the exposed side to the unexposed side** so that the unexposed surface nor any material near that surface is ignited. To achieve EI the surface of the door must be **≤140°C** average and **≤180°C** at any individual point.

EI rated doors are classified to **EN 13501-2**. The period is declared in minutes, 30, 60, 90, etc. An EI rated door with a 30 min classification period would be declared as **EI30**.

Simplis manufacture:

E120 rated access panels
EW120 rated **Christo Riser Doors**
EI60 rated access panels

*The inventors of
the original
metal riser door*

