

Value Range Metal Door



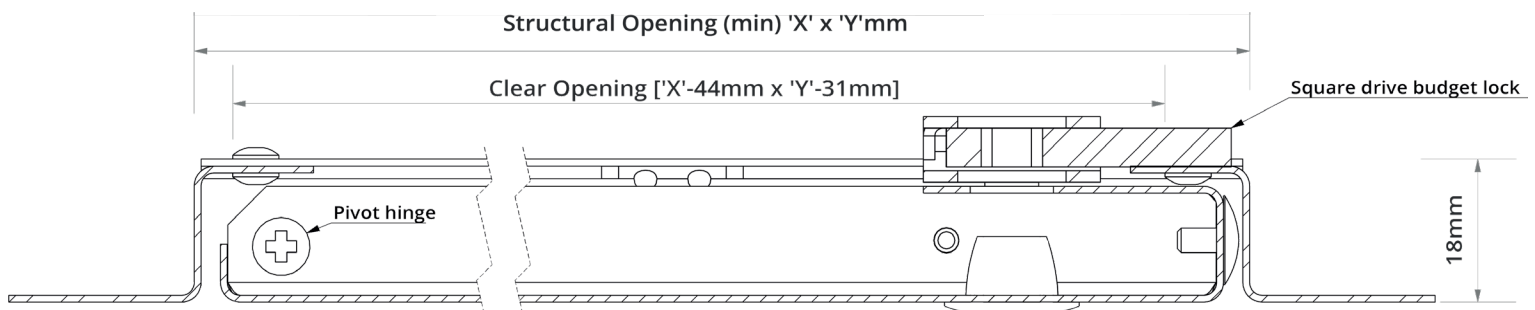
Key Features

- Can be over painted to blend into the surrounding surface
- Pre-punched fixing holes for simple installation
- Picture frame option
- Beaded frame option
- Unique pivot hinge design
- Shallow 28mm depth on all standard sizes

Value Range Access Panels provide **low cost metal faced protected openings** in ceilings and walls for access to **building engineering services** where **space is at a premium**. The **narrow 18mm profile** produces a **lightweight, robust solution** that can be used in **all types of wall** or ceiling construction.

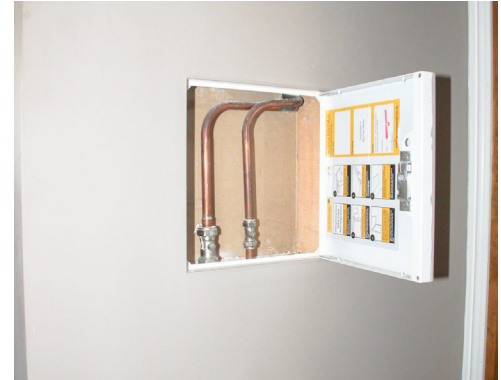
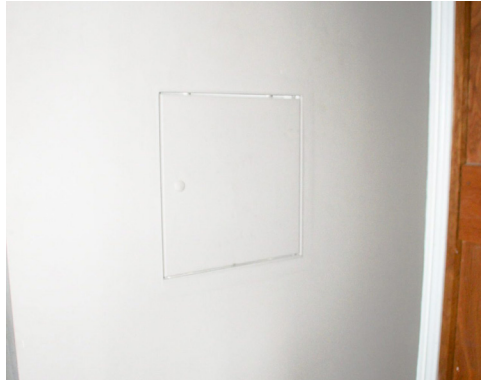
Outwardly the panels resemble the Contract and Premium ranges and consist of a **pivoting door tray** and frame with **square drive operated lock** finished in **powder coated white** which **can be over painted** on site with emulsion to blend with the surrounding surface.

There are two frame options for the Value Range Metal Door. A **beaded frame** type with **perforated flange** to key into the **surrounding membrane**. This is used where the surface has yet to be skimmed or taped and jointed. Or the **picture frame**, where the **solid flange** sits on the surface of the wall or ceiling. This covers the **cut edge of the aperture** and is used when the surface has already been finished and decorated.



Contact us for a factory tour or to arrange an on site demonstration





Door Tray & Frame

Formed from **1.0** and **1.2mm** Zintec electrogalvanised mild steel with a **25mm** wide perforated frame finished in **polyester powder coat white (RAL 9010 20% Gloss)**.

Hinge & Lock Mechanism

Factory fitted removable pivot screws located into holes in the frame. Square drive operated lock riveted to the return fold of the door tray with tongue locating over the edge of the frame when closed. Keyhole concealed by white plastic cap.

Availability

Standard sizes (as below) available with **next day delivery** if ordered **before 2pm**. Bespoke **access panels** available on request. Please call or email a member of our **Technical Sales Team** for more information.

Fitting Preparation

Prepare a clear opening in the structure **5mm** larger than the ordered panel.

Turn up the fixing tabs and screw fix using suitable screws through the **pre-punched holes** to all four sides of the frame. Use all fixing holes provided. Face fix through the flange fixing holes in the **beaded frame** type. Finish the **beaded frame** with scrim tape in the same way as any plaster stop bead. To **maintain** even gaps between door and frame complete the operation with door in frame where possible.

To remove the door from the frame remove the pivot hinge plate with a cross-head screwdriver. When refitting and after any installation ensure the pivot hinge plates are fully located and if fitted, the retaining chains are in place.

Online Support

See website for **fitting guides** and **videos**. **DXF, DWG, CAD, PDF, BIM cross-section drawings** and full technical specifications.

Operation & Maintenance

Using the '**T**'-key supplied push the **Spring Loaded Invisible Keyhole (SLIK) system** aside, engage the key into the locks then open and close while supporting the door. The **SLIK system** springs back automatically to **conceal the keyhole**.

Avoid **abrasive cleaning materials**. Check the operation annually, especially the hinge points and lock, or more frequently if used very regularly. Tighten or oil as required.

Standard Sizes		
150 x 150	200 x 200	300 x 300
450 x 450	600 x 300	600 x 600

Contact us for a factory tour or to arrange an on site demonstration

